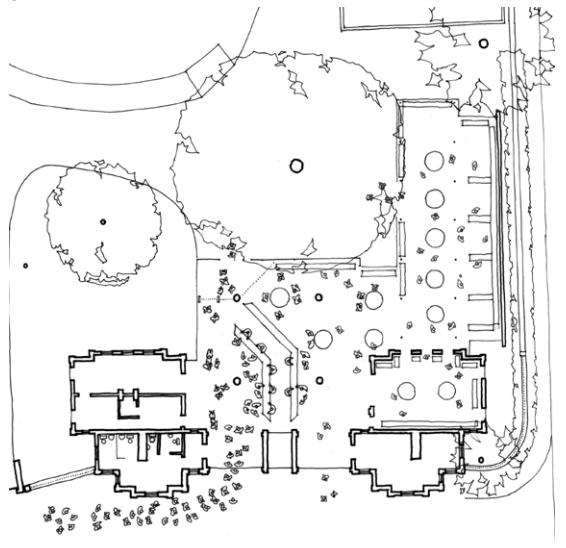


BRISTOL ZOO ENTRANCE & SHOP

BRISTOL ZOOLOGICAL GARDENS,



4 Bristol Zoo's entrance reception had become cluttered and confused with the shop.

The resolution was to clarify the central pavilion as reception only with a new wing inserted discreetly to one side into a pocket of unused land.

The new steel framed pavilion responds in form,

6 size and scale to the original classical 1830s lodges. In the longterm it can become a completely separate reception and shop building.

Client: Bristol Zoological Gardens
 Contractor: Rigg Construction Ltd
 Date: 2012 - 2014
 Value: £ 400,000

- 1 New wing
- 2 New wing roof
- 3 Original 1830s lodge entrance
- 4 Reused central pavilion
- 5 New shop
- 6 Expressed internal frame
- 7 Plan of entrance building with new shop to right