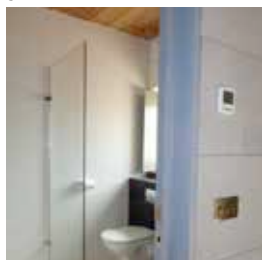


DINNINGTON MANOR BARN

DINNIGTON, SOMERSET



4 A 1906 listed barn, converted to open living areas and entrance court, with ground floor bedrooms.

All new partitions are differentiated by contrasting materials and colours to maintain the quality of the original spaces and surfaces.

Client: Private
 Contractor: J Layzell & Sons
 Date: 2010-12
 Value: £ 700,000

- 8 Stair & inner court
- 2 Entrance
- 3 House elevation
- 4 Original barn interior
- 5 Sitting room
- 6 Shower room
- 7 Entrance area
- 8 View to living area